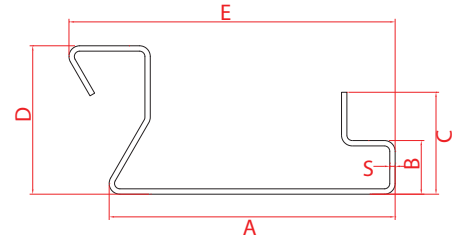
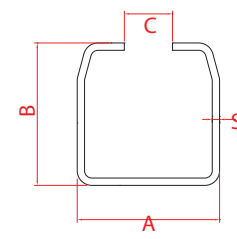


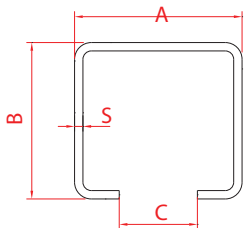
INS-10



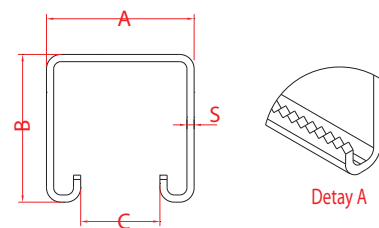
INS-11



INS-12



INS-13



INS-14



*"You imagine, we can shape it."*

**CIVIL WORKS &  
STEEL CONSTRUCTIONS**



MEKO TUBING  
7 Eylül Mah. Ümit Tunçağ Cad. No:5 Torbalı - İZMİR / TÜRKİYE  
T: +90 232 274 80 00 - F: +90 232 335 51 38  
E: meko@mekometal.com.tr - export@kmc.com.tr

[www.mekometal.com.tr](http://www.mekometal.com.tr)

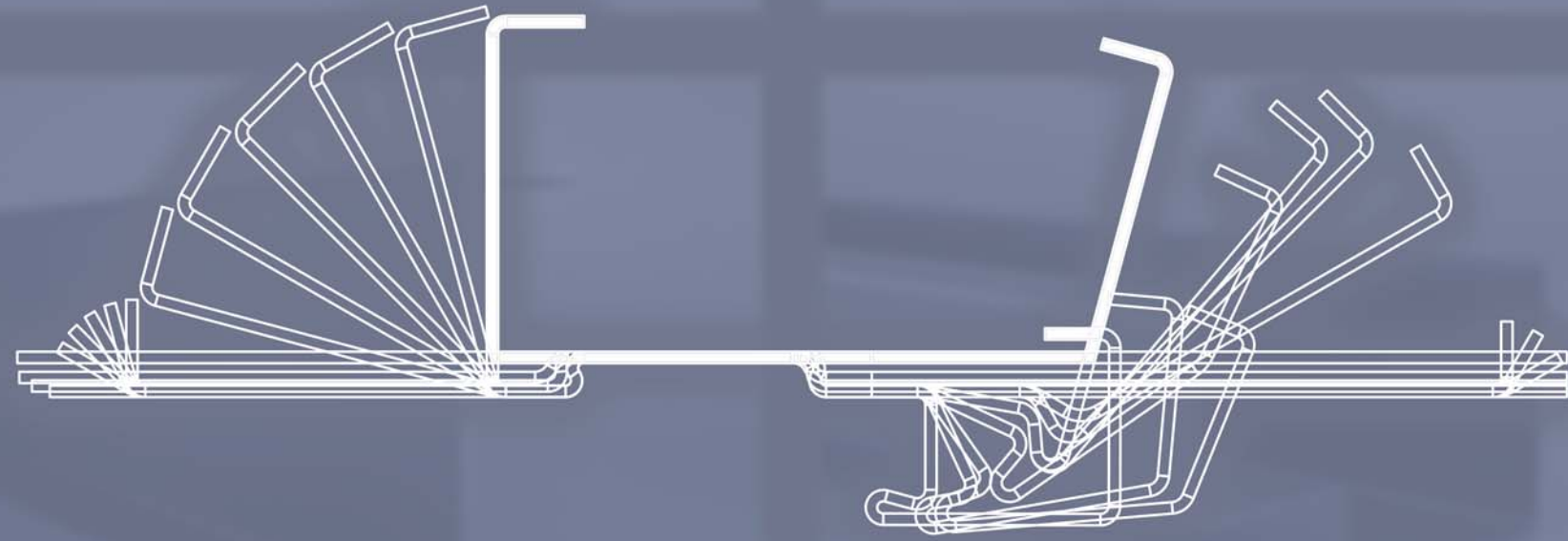
[www.kmcgroup.com.tr](http://www.kmcgroup.com.tr)

[www.mekomag.com](http://www.mekomag.com)

[kmc\\_metal](#) [kayserimetalcenter](#) [kmc\\_metal](#) [kmcgroup](#)





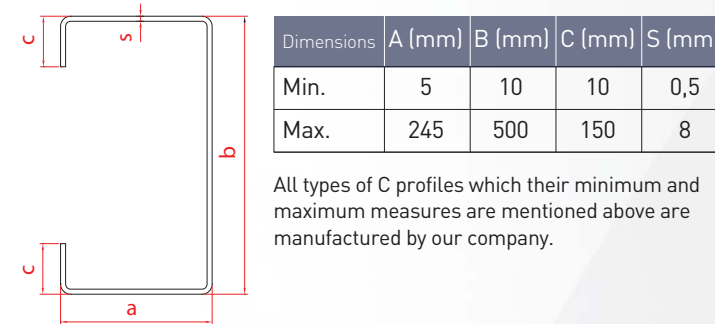
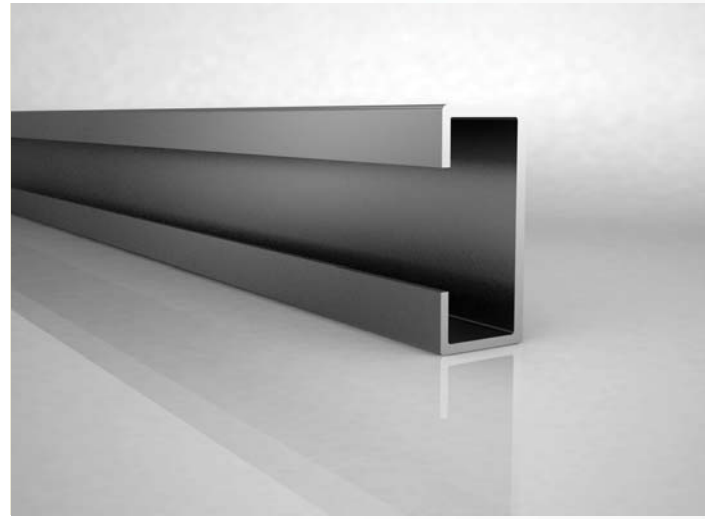


## CIVIL WORKS & STEEL CONSTRUCTIONS

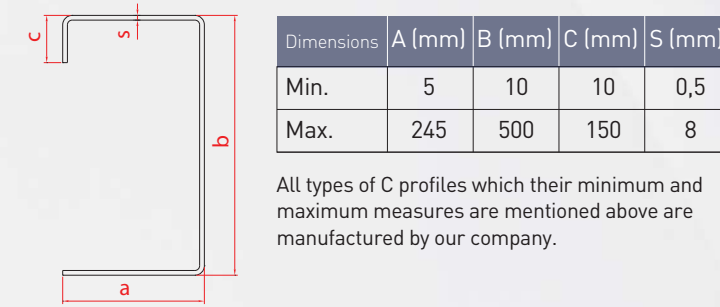
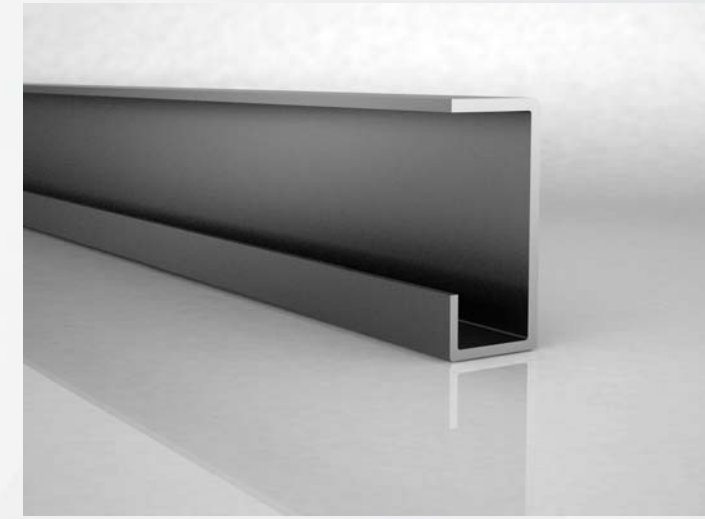
- C, Z & SIGMA profiles
- Standard industrial tubes & profiles
- Crane & cornice profiles
- Scaffolding special profiles
- Window & door sub-frame profiles
- PVC joinery support profiles
- Gypsum board wall & suspended ceiling profiles
- Special profiles for steel construction
- Fire door frame
- Door frame

The design and production of our molds and fixtures that are using in every stage of the production are produced by our own experienced technical team. On special profiles punching, bending, edge reducing, edging, end cutting and similar requested applications can be performed to have them as semi and finished product.

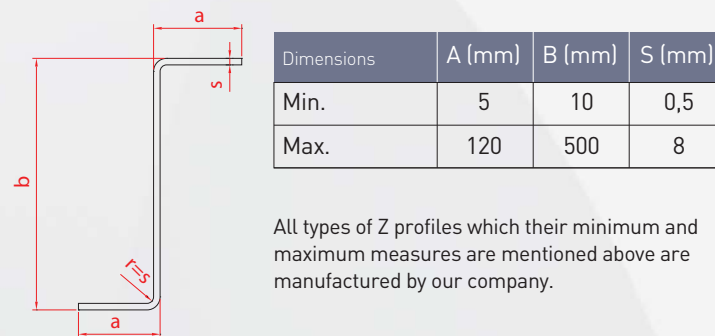
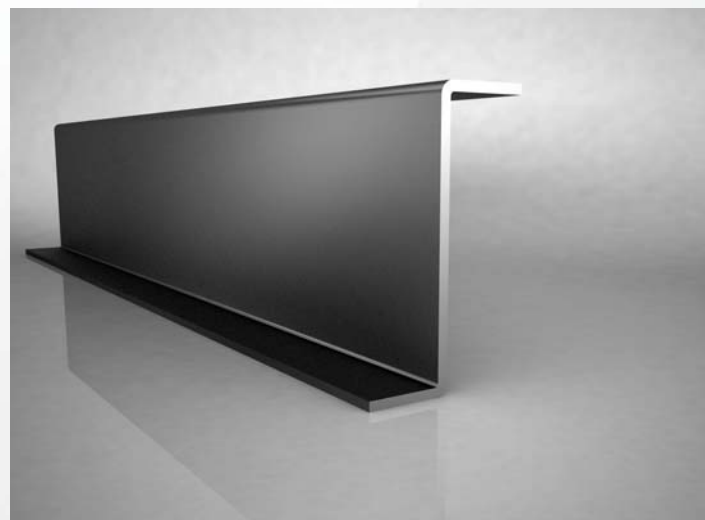
### C PROFILES



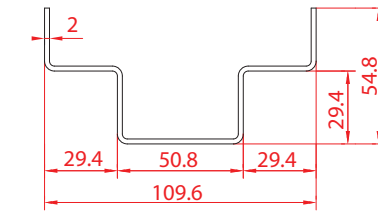
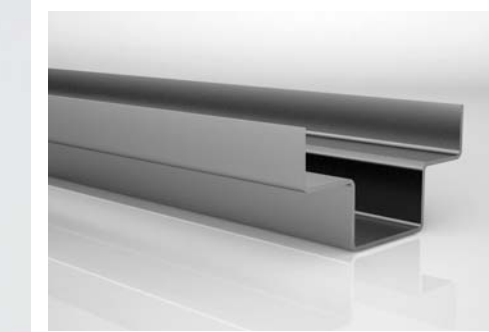
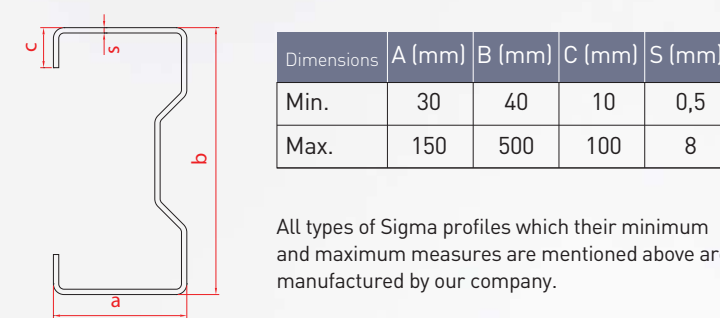
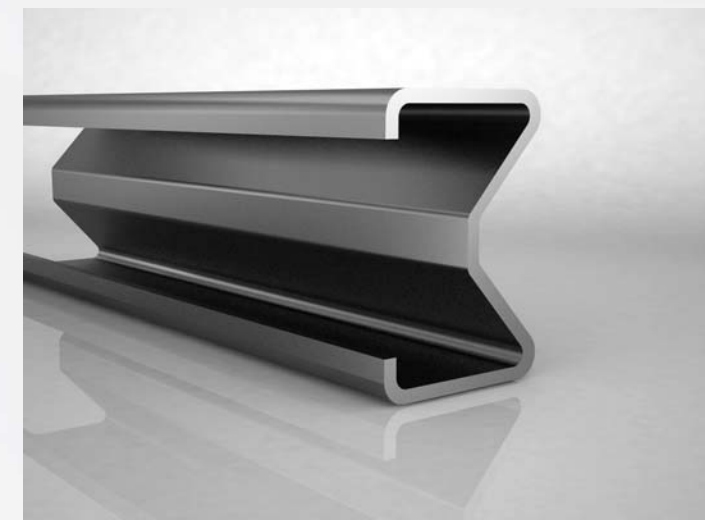
### C PROFILES



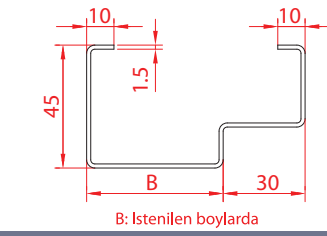
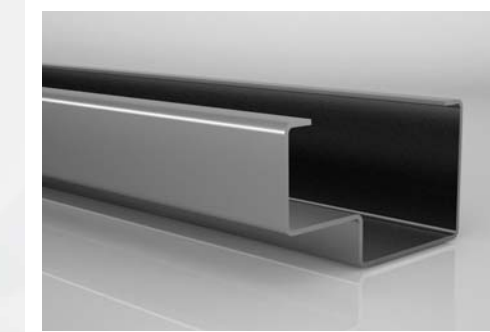
### Z PROFILES



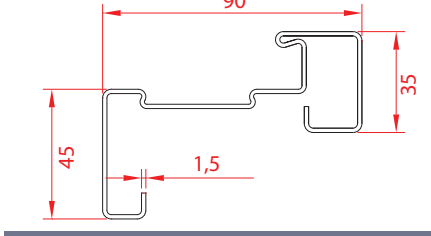
### SIGMA PROFILES



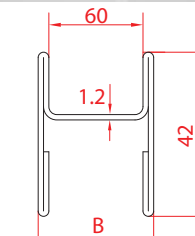
INS-01



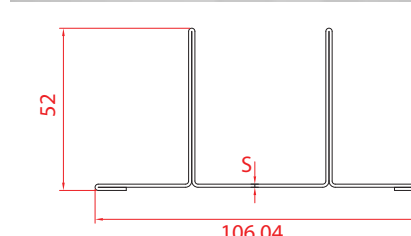
INS-02



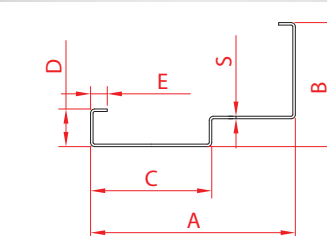
INS-03



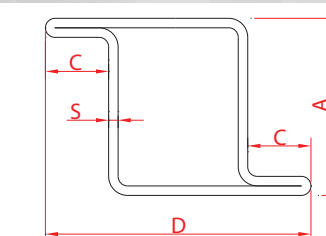
INS-04



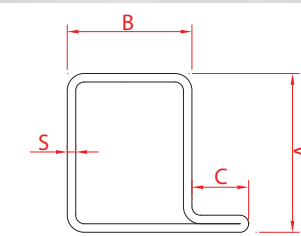
INS-05



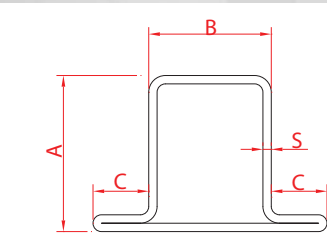
INS-06



INS-07



INS-08



INS-09